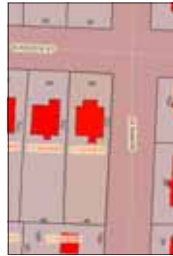




3600 Glenwood Ave  
Raleigh, NC 27612  
919 782-5502

**Peter Rumsey, Broker**  
919.971.4118  
www.peterRumsey.com



**412 Glascock St  
Mordecai Oakdale**

**2 bedrooms. 1 Bath.  
Walk-up attic.\*  
Basement.  
Central heat & air.  
0.19 acre lot.**

**\$215,000.**  
tmls#923343.

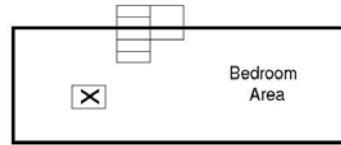
*Your own "field of dreams".*

The 173 ft deep fenced corner lot offer is extraordinary. Vegetable gardens in back, a shade garden in front, volley ball, dog run, kids playground, off street parking, all are possible - at the same time.

*Bright and cheery.*

This is not your grandmother's kitchen. It has been updated and opened to include the dining area. The kitchen opens onto a back deck and nearby parking pad.

\*The 30ft long walkup attic is not included in the finished sqft because the ceiling height is just under 7 ft. It is a versatile space that is can be used as a studio, office and/or guest room.

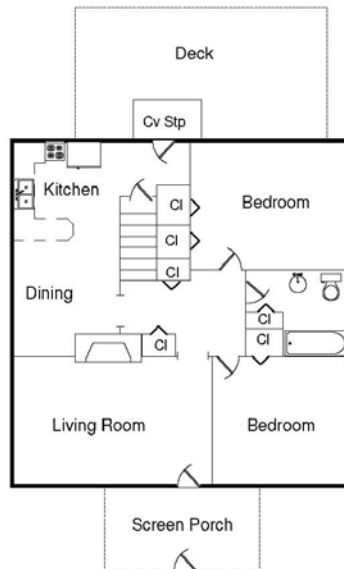


Refinished hardwood floors, lots of windows, a ceiling fan and fire-place are all part of the 17 ft long living room which opens onto the screened front porch.

*Concrete basement.*

Unique homes.  
Fresh ideas.  
Proven success.

Peter lives in Historic Oakwood where he moved the endangered historic home shown at the top and one other to a site near the Governors Mansion. He works with buyers and sellers throughout the Triangle area.



A map showing the Mordecai and nearby neighborhoods is available by fax or email or on my web site. This map includes the Wake County Moore Square Museum Magnet Middle School, the Exploris School and the Raleigh Charter High School at Pilot Mill. These are just a few of the reasons a growing number of households are moving "downtown" from elsewhere in the Triangle.

\* Go to [www.peterRumsey.com](http://www.peterRumsey.com) to download this flyer, get maps & descriptions of historic areas, look up all homes newly listed in the Triangle MLS, view a portfolio of my past and current listings, find school links, and much more.

