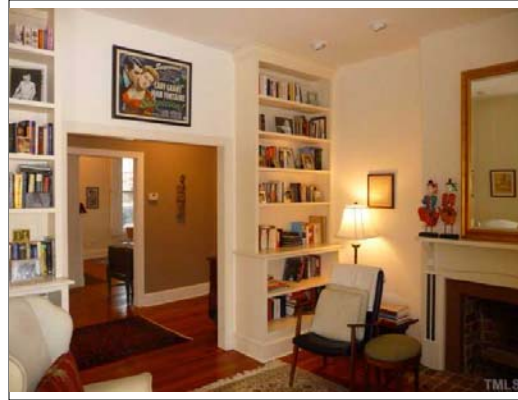




Exterior Front

The Sallie Clark House, c.1875, was renovated and expanded in the 1980s as a home for the middle-eastern art and sculpture collection of the Hahn family. The old exterior is solid brick, not brick-veneer.



Living Room

Visual layering creates the spatial and visual music described by Sarah Susanka in her new book *Not So Big Remodeling*. The bookshelves were added in the living room by the current owners.



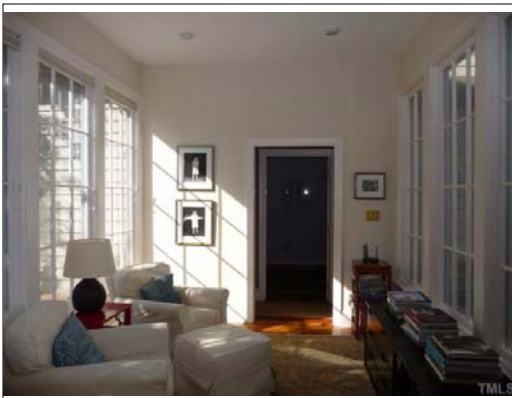
Land/Lot

A brick patio and side deck near the kitchen look out on the two grand houses (pictured below) that are your neighbors across a quiet one-way side street. The fenced yard is now a play space for two robust sub-teen boys.



Interior Space/Layout

A visual symphony The view looking from the dining room toward the eat-in kitchen with Corian counters and the gallery like hall and spaces to the right.



Sun Room

Truly a sun room This intimate space next to the kitchen, opens to the side porch (left) and interior courtyard (right).



Living Room

The living room is what Sarah Susanka calls an away space. Note the elegant and practical shutters found throughout the older sections of the home.

1694096

703 N Bloodworth Street

550000



Other

The finished 559 square foot studio was recently converted from the oversized garage added in the late 1980s. The roof was new in 2007. Tankless H2O in 2006.



Interior Space/Layout

Three doors open into the central courtyard. The surrounding gallery-spaces and passageways include a recessed wall cabinet for displaying objects dearart.



Exterior Back

A sawn-work adorned walkway connects the main house with the finished studio which is stubbed for water. The large concrete pad is versatile space for off-street parking, basketball, trikes and more.



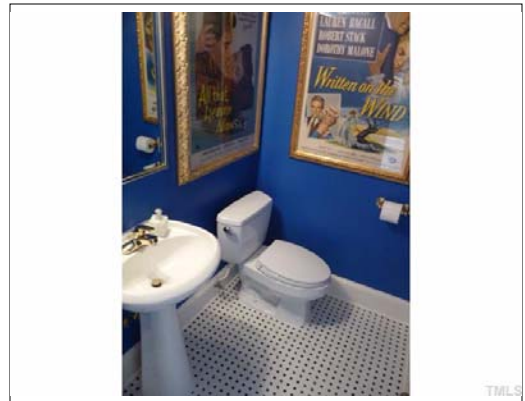
Master Bedroom

The master is nicely separated from the other 2 bedrooms that share a modern bath.



View

You are keeping good company with two of the grandest homes in downtown Raleigh. Walk to the nearby Person St Pharmacy for an old-fashioned vanilla coke and lunch.



Bathroom

The handsome guest bath was added earlier this year. The master bath with marble counter and floors has custom subway tile.