

# Belvidere Park



**1800 Midwood Dr  
Raleigh, NC 27604  
c. 1948**



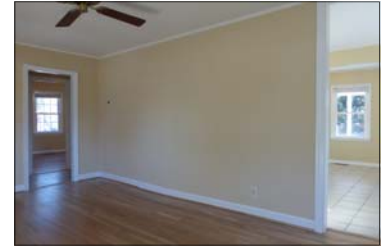
**2 bedrooms.  
1 bath.  
925 sqft  
0.21 acres.  
Carpport.  
\$255,000.  
mls#2103321.**



## Features

### Lots of Plusses

- Cozy cottage – New updates include windows, heat/air, water heater, refinished floors, smooth ceilings, interior paint.
- Multiple expansion options - Screen or enclose the carport (added by a prior owner), add a garage, whatever.
- Choice 0.21 acre corner lot - Store your boat in back and still have room for horseshoes, volley ball and expansion into the big grassy lawn that is partially shaded by three mature trees and a magnificent Magnolia.
- Eclectic Belvidere Park community - Developed shortly after WWII, the neighborhood is now home to families and households of all ages.
- Walkable, bikeable location - Enjoy the urban convenience of nearby parks, dog park, greenway, shops, restaurants, theaters, museums, colleges & universities, NC government complex, downtown Raleigh, much more.
- Call for names of current newer & older residents who can share the history of Belvidere Park.



**Move in. Move on. Move Up.  
Real estate for the way you live.**

Debra focuses on thinking differently, thinking about you. Whether you're looking to move in, move on, or move up, she's ready to listen to your needs and help you take the next step.



514 Daniels St. #177  
Raleigh, NC 27605



**Unique homes • Fresh ideas  
Proven success.**

Peter lives in Historic Oakwood where he moved endangered historic homes to sites near the Governors Mansion. He works with buyers and sellers throughout the Triangle area.



Debra@DebraSmith.com 919.349.0918 \* 919.971.4118 Peter@PeterRumsey.com